



Thorburn Square, London, SE1 5QF

Guide Price £400,000 to £425,000. A stylish two bedroom apartment located in the heart of Bermondsey within sought-after and picturesque Thorburn Square conservation area.

The apartment boasts a modern kitchen with plenty of storage, bright reception room with access to the private balcony, a sleek family bathroom and two double bedrooms, one with built in storage. Additional storage can be found in the hallway.

A short walk away from a plethora of local amenities such as pubs, grocery shops, independent cafes, breweries, popular Maltby Street and Spa Terminus markets, along with the greenery of Southwark Park. A short stroll away is the up and coming Bermondsey Biscuit Factory Regeneration Plan.

Years Left On Lease - 181

Annual Service Charge - £2625.84

Annual Ground Rent - £10

Council Tax Band - B

Council tax and, where applicable, lease information, service charges and ground rent are given as a guide only and should always be checked and confirmed by your Solicitor prior to exchange of contracts.

- Chain Free
- Stylish and Bright Two Bedroom Apartment
- Long Lease - Recently Extended
- Tranquil Location
- Spacious Two Bedroom Apartment
- Close to Local Amenities
- South Facing Balcony
- New Combi Boiler
- Plenty of Storage

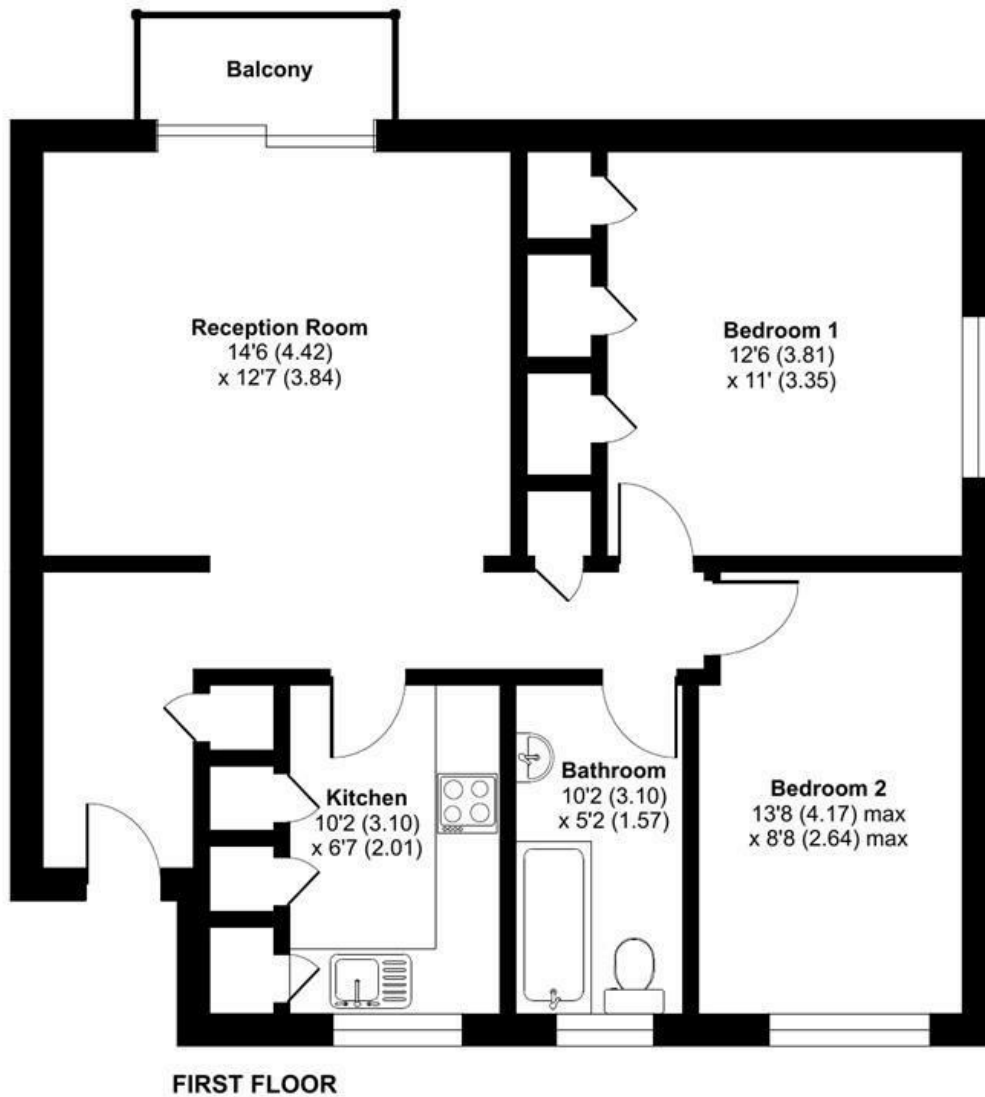
Alex & Matteo
ESTATE AGENTS

Guide price £400,000

Thorburn Square, London, SE16

Approximate Area = 749 sq ft / 69.5 sq m

For identification only - Not to scale



Alex & Matteo
ESTATE AGENTS



Floor plan produced in accordance with RICS Property Measurement 2nd Edition,
Incorporating International Property Measurement Standards (IPMS2 Residential). © nitchcom 2024.
Produced for Alex & Matteo Estate Agents. REF: 1227677

Energy Efficiency Rating		
	Current	Potential
Very energy efficient - lower running costs		
(92 plus) A		
(81-91) B		
(69-80) C		
(55-68) D		
(39-54) E		
(21-38) F		
(1-20) G		
Not energy efficient - higher running costs		
	68	79
England & Wales		
EU Directive 2002/91/EC		